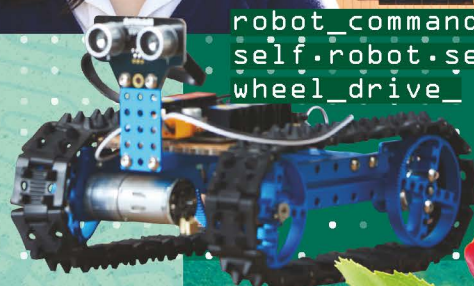


# NSW Government Schools

International Student  
Guide 2018–2019



*Your future  
begins today*



```
robot_commands:  
self.robot.set_  
wheel_drive_
```

shift

a

u







# About DE International

DE International is the international unit of the NSW Department of Education. We manage the international student program for all NSW government schools including applications, enrolments and compliance for overseas students studying in NSW government schools.

The NSW government school system is the largest education network in Australia. Our students achieve academic excellence in a safe, secure and innovative learning environment. Students will have a rich and rewarding learning experience.

Our support and compliance staff work closely with schools and homestay providers to ensure students learn and live in safe and supportive environments.

We also facilitate study tour groups to our schools. Groups include students, teachers, education officials and overseas government delegations.





*Welcome  
to NSW!*

02

## Why Study in NSW?

02

8 Reasons for Choosing a  
NSW Government School

04

Future Focused Learning

05

STEM

06

Support Systems

07

NSW Higher School Certificate (HSC)

08

## Academic Pathways

10

Your Academic Pathway  
to Further Study

12

Intensive English Centres

13

Senior Secondary School

14

Junior Secondary School

15

Primary School

16

Our Successful Graduates

18

School Life

20

## Living in NSW

20

Accommodation Options

22

Things to See and Do

23

Transport

23

Weather

24

## Applications

24

Online Information

25

Entry Requirements

26

How to Apply

27

Calendar and Fees

28

Map of Participating High Schools in NSW





# 8 Reasons for Choosing a NSW Government School



## Academic Excellence

- Our schools offer academic excellence in a safe, friendly and welcoming environment. Students acquire high-level English language skills, study a wide range of subjects and develop future focused capabilities.
- Programs for gifted and talented students and extension subjects in senior high school ensure students are challenged and achieve their best.
- Each year over 25% of our international students appear on the Higher School Certificate (HSC) Honour Roll.



## Exceptional Teaching

- Highly qualified, university-trained teachers are accredited through the NSW Education Standards Authority (NESA).
- High-quality, engaging instruction inspires students to achieve their best in academic subjects, sports, the arts and many other areas of study.
- Small class sizes provide more one-on-one guidance from teachers who cater for individual student needs and ensure each student achieves their maximum potential.



## Student Welfare Focus

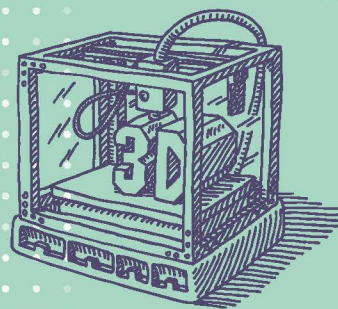
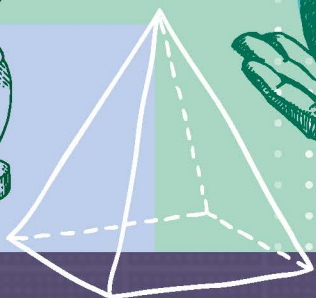
- Individual care is provided for every student in a safe and secure learning environment. Every school offers an orientation program. Buddy systems pair international with local students to help new students settle in and make new friends.
- School-based student support personnel includes an international student coordinator, year adviser, school counsellor, careers advisor and English language support staff.
- Students may also access our dedicated team of DE International advisors who provide additional support and individual services.



## Learning Facilities

- Digital technology is integrated through the school curriculum and facilitated through WiFi connectivity, tablets, laptops, interactive whiteboards, computers and video conferencing.
- Modern facilities including science and language labs; libraries; auditoriums; arts, sport and recreational facilities designed to maximise student engagement, participation and learning. A range of technologies is provided for specialised subjects including 3D printers and robotics labs.
- Increased engagement in learning is achieved through programming tools, virtual learning environments, game-based learning and multimedia creation tools and simulations.





## Academic Pathways

- The Higher School Certificate (HSC) is the highest educational qualification awarded in secondary education in NSW and is nationally and internationally recognised. It is awarded to students who have satisfactorily completed Years 11 and 12 at secondary school.
- International students successfully progress to universities and colleges in NSW, Australia and overseas.
- Past international students are now enjoying success at university and in professions both in Australia and overseas.



## Language Support

- High quality Intensive English Centres support high school aged students who require English language improvement.
- Our Intensive English Centres provide intensive English language tuition, orientation and welfare support, helping students adjust to their studies quickly.
- Primary school students may receive language support through school-based English language support teachers.



## Student Life

- Students perform better in school when they live in a supportive family environment.
- Homestay accommodation is a unique opportunity for international students in Years 9 to 12 to stay in an Australian family home and to learn about Australian culture. Homestay provider standards are regulated by DE International.
- International students under 18 years of age must live with a parent or approved carer.



## Global Opportunities

- Sydney has been voted one of the world's friendliest and most culturally diverse cities (according to Condé Nast Traveler 2016).
- Students learn other languages and connect with students from a wide range of cultural backgrounds in the multicultural environment of our schools.
- Living and studying in NSW develops students as global citizens enabling them to live and work anywhere in the world.



# Future Focused Learning

NSW government schools are committed to developing future-focused learning capabilities.



Future-focused learning prepares students across all curriculum areas and learning stages with skills and capabilities to thrive in a rapidly changing and interconnected world. Future-focused teachers know and understand the needs and talents of their students. They are flexible and select from a range of effective teaching strategies.



## Flexible Learning Space

Future-focused learning and teaching requires students to work creatively and collaboratively to investigate, negotiate and solve real world problems. This can be supported by flexible learning spaces that provide students with choice in how and where they learn. Flexible learning spaces reflect the environments students may encounter in their future studies and workplace where there is a focus on self direction, evaluation and collaboration.



## Integrated Technology

Future-focused learning and teaching seamlessly integrates a range of technologies to support learning across multiple curriculum areas.

Technology is integrated in meaningful ways to engage and empower students to create and share their learning.



## Problem Solving and Critical Thinking

Students experience authentic, real-world contexts for project-based learning. They develop knowledge and analytical skills across multiple subject areas by investigating and responding to engaging questions, problems or challenges.



## Futures Learning Research

The use of evidence-based high quality research successfully equips students with the skills and capabilities needed for a successful future.



## Creativity and Innovation

Creativity is recognised as a critical skill for twenty-first century learners. Our schools foster creativity and innovation through the use of various teaching methods, real world tasks and integrated technology.



## Leadership and Teamwork Skills

Students develop leadership skills in the classroom and across broader school activities. Opportunities include leading group tasks, presenting research findings and representation on the Student Representative Council and school leadership team.



# STEM

Science, Technology,  
Engineering and Mathematics

STEM education enhances student learning experiences through engaging curriculum that may include integration, enquiry and project-based learning.

Students apply knowledge, deepen their understanding and develop high-order thinking skills within an authentic context, so they can fulfil future career aspirations that require STEM skills.

Students may follow pathways for STEM related careers, not only in science, medicine and engineering but also a range of highly sought-after global careers.



*I can see myself  
doing this in  
the future* 😊





# Support Systems

## Student Welfare Focus

Our schools are dedicated to creating positive and enriching learning environments where students can achieve their potential.

Access to a wide support network of teachers and support staff ensures students settle into their new school quickly and easily.

## International Student Coordinator

Each school has a dedicated and caring international student coordinator who is the first point of contact for international students. The coordinator will conduct orientation programs, introduce students to key staff at the school and provide ongoing support throughout the enrolment process at school.

## Year Adviser

Each academic year is assigned a year adviser who monitors the academic progress of all students in that year. The year adviser works closely with the school's learning and support team and classroom teachers to help students achieve academic success.

## Careers Adviser

The careers adviser provides guidance to students in areas such as subject selection, career planning, selecting appropriate tertiary study options and preparation for entering the workforce.

## Dedicated DE International Staff

Students may also access our dedicated team of multilingual DE International staff and student advisors who provide additional support and personalised services to international students.



## English Language Support

Specialist teachers provide ongoing assistance to students during their enrolment in a high school. They teach students the English language and literacy skills needed in all subjects.

## Bilingual Staff

Many of our schools have bilingual staff who will be able to communicate with parents and carers in their own language.

## Learning and Support Team

This team looks after students' welfare. They help students to settle into their school and assist with any personal or study related issues. The head teacher looks after the wellbeing of all students and the team provides guidance and support as required. All matters discussed will be treated confidentially.

## Homework Centres

Many schools have homework centres and provide free tutoring for students after school. Teachers supervise students' completion of homework and provide advice on queries they may have regarding coursework.

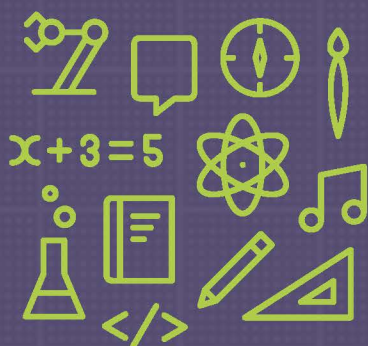




# NSW Higher School Certificate (HSC)

The HSC is a highly valued, internationally recognised credential. It gives international students the best opportunity to gain a place at highly ranked universities in NSW, Australia or overseas. Our students achieve exceptional results every year which gives them the opportunity to pursue their interests and professional career aspirations.

## Benefits of the HSC



**Wide range of subjects**  
available – over 100 courses



**Pathway to universities in**  
NSW, Australia and overseas



**Education tailored towards**  
student interests

The HSC is a two year program and students must satisfactorily complete Years 11 and 12. Students can choose from a wide range of subjects and can tailor their senior studies to their interests, abilities and future study plans at university.

Each year, over 25% of our international students in Year 12 appear on the HSC Honour Roll for scoring over 90 in a subject. In 2016, three international students achieved “Top All-Rounder” status for scoring 90 or above in 10 or more units. Previously the top Australian Tertiary Admission Rank (ATAR) for an international student was 99.95.



# Academic Pathways

The diagram below shows the academic pathways available to eligible international students, from primary school through to secondary school and university.



## NSW Government Schools

### Primary School



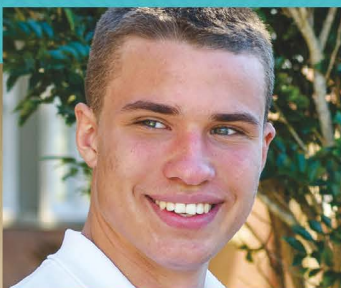
Year	Kindergarten	1	2	3	4	5	6
	Early Stage 1	Stage 1		Stage 2		Stage 3	





*I want to be...*

## Secondary School



## Graduate Providers

### University



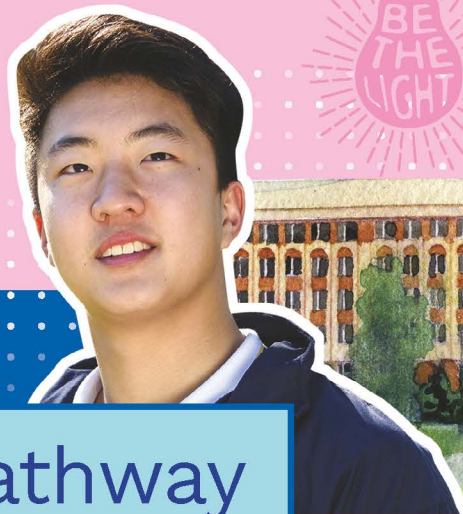
	Junior				Senior	
Year	7	8	9	10	11	12
	Stage 4		Stage 5		Stage 6	
	Intensive English Centre Years 7-11 (if required)				HSC	

Australian and International		
Degree	Masters Degree	PhD





*What do  
I want to do?*



# Your Academic Pathway to Further Study

The HSC results are used by the Universities Admissions Centre (UAC) to calculate a rank order of students known as the Australian Tertiary Admission Rank (ATAR). The ATAR is not a mark, nor is it a summary of the HSC. It is a ranking system used to allocate university placements. Each university sets an ATAR as the minimum entrance level for each tertiary course.

Deciding what to study at university is an important decision which can be challenging for students. There are many pathways to further education, however choosing the right subjects at school can make it easier for students to gain entry and succeed.

Our schools have Careers Advisors who help students make decisions regarding their future and career. Students will be given support and advice on what to study and what careers their subject choices may lead to.

Please note that universities set their own subject prerequisites and course minimum entry requirements. International students are encouraged to seek advice from their International Student Coordinator or Careers Advisor for advice regarding suitable subject choices for university entry.

## Examples of possible careers and tertiary study plans based on subjects studied:



### Career

Accounting  
Banking and Finance  
Business  
International Studies  
Law  
Liberal Studies



Health and Medical Sciences  
Medicine  
Nutrition and Dietetics  
Optometry  
Physiotherapy



Aeronautical Engineering  
Architecture  
Engineering  
Information Technology

### Subjects

- Accounting/Business Studies/Economics/Legal Studies
- Chemistry/Physics
- English as a Second Language
- Mathematics
- Society and Culture/History

- Biology
- Chemistry
- English as a Second Language
- Mathematics
- Physical Development Health and Physical Education
- Physics

- Engineering Studies
- English as a Second Language
- Industrial Technology
- Information Processes and Technology
- Physics
- Software Design and Development





### Thuy Linh Chu's Pathway to Success

"My advice to students who are interested in studying at a NSW government school is to use Year 11 and 12 to study subjects that you really enjoy. Doing this will give you a sense of direction for the university qualifications you want to study and what type of job you want to have in the future."

Thuy Linh Chu



*my first day!*



#### Subjects Studied

- Ancient History
- Chemistry
- English as a Second Language
- Mathematics Extension 1 & 2
- Modern History
- Physics



#### Major School Achievements / School Involvement

Kogarah High School  
Elected as School Captain



#### University Course

Bachelor of Science (Maths) & Bachelor of Engineering (Chemical)



#### Current Occupation

Engineer – employed full time

### Jiahua (David) Huang's Pathway to Success

"Studying in a NSW government school is a truly once in a lifetime experience. Here you will learn to be more independent and become a much stronger individual. It is a great stepping stone for your future which could lead to a variety of possibilities – a place where many fantastic careers start."

Jiahua (David) Huang



#### Subjects Studied

- Chemistry
- Chinese
- English as a Second Language
- Mathematics Extension 1 & 2
- Physics



#### Major School Achievements / School Involvement

Killarney Heights High School  
Dux of School  
Nominated for 2012 Academic Award



#### University Course

Bachelor of Medicine/  
Doctor of Medicine



#### Current Occupation

Junior Medical Officer at St George Hospital (starting 2018)





# Intensive English Centres

Students need strong English language skills to excel in their studies. Our Intensive English Centres (IECs) enable students to develop English language skills so that they transition to mainstream high school with confidence.

NSW government schools offer intensive English programs for students entering high school from 12 years of age.

The IEC helps students to understand our school system and provides English language tuition and welfare support.

Advantages of enrolling in a NSW government school IEC:

- Study in a small class (maximum 18 students) with students of a similar age and English proficiency
- Learn intensive English within the school and through the school curriculum
- Assist students to settle quickly and provide support through our transition program to high school
- Participate in school activities with partner high schools
- Access to school counsellors and welfare support
- Use of all school facilities.

University trained and fully-qualified English language teachers provide lessons in English through core high school subjects.

## Duration

Intensive English programs are conducted throughout the school term. Students typically require two terms to transition to their mainstream course.



*I can do this*

## Locations

IECs provide intensive English programs in the following NSW government high schools in Sydney and Wollongong:

- |                 |                                                               |
|-----------------|---------------------------------------------------------------|
| • Bankstown     | • Kogarah                                                     |
| • Beverly Hills | • Lurnea                                                      |
| • Cabramatta    | • Marrickville                                                |
| • Chatswood     | • Marsden                                                     |
| • Chester Hill  | • Miller                                                      |
| • Evans         | • Cleveland St Intensive English High School (central Sydney) |
| • Fairfield     | • Warrawong (Wollongong).                                     |
| • Holroyd       |                                                               |



# Senior Secondary School

Years 11 and 12 enable students to develop the necessary skills and knowledge they need to successfully complete the NSW Higher School Certificate (HSC).

as-pir-ation  
~ (to do/be)

The HSC is a two-year program with assessment tasks in each subject and practical work for some subjects and a final external written examination, in each course, at the end of Year 12.

## Curriculum

Students must complete at least 12 units of preliminary courses (Year 11) and 10 units of HSC courses (Year 12), including English. Most HSC courses are worth 2 units each. Students typically study a minimum of six subjects in Year 11 and continue with five of these subjects in Year 12.

## Compulsory Subject

English (Standard or Advanced) or English as a Second Language (ESL)

## Choice of Subjects

A wide range of subjects are available in the NSW curriculum, including:

- Ancient or Modern History
- Business Studies
- Creative Arts (Dance, Drama, Music, Visual Arts)
- Economics
- Engineering Studies
- Food Technology
- Geography

- Legal Studies
- Mathematics (with extension subjects available)
- Personal Development, Health and Physical Education
- Science (Biology, Chemistry, Earth and Environmental Science, Physics)
- Software Design and Development
- A wide choice of languages
- A selection of vocational subjects that also provide a Certificate-level qualification upon completion.

For more information visit the NSW Education Standards Authority (NESA) website:

[educationstandards.nsw.edu.au/wps/portal/nesa/home](https://educationstandards.nsw.edu.au/wps/portal/nesa/home)

## Intakes

### Year 11 Only

- Term 1 (January)
- Term 2 (April)

CRICOS COURSE CODE: 073980K



# Junior Secondary School

Students in junior secondary school choose from a broad range of subjects and take on more personal responsibility for their learning. They must present personal opinions and interact during lessons as well as ask questions and participate in group activities.

The junior secondary school program covers Years 7 to 10. Students may commence anytime up to the beginning of Term 4 (October) of the academic year.

## Curriculum

Learning in Years 7 to 10 focuses on eight key learning areas (KLAs):

- Creative Arts (Dance, Drama, Music and Visual Arts)
- English
- Human Society and Its Environment
- Languages
- Mathematics
- Personal Development, Health and Physical Education
- Science
- Technological and Applied Studies.

Students who are talented in performing arts (dance, drama, visual arts or music), technology, languages or sport may apply to high schools which offer specialist facilities.

## Intakes

### Years 7 to 10

- Term 1 (January)
- Term 2 (April)
- Term 3 (July)
- Term 4 (October)

CRICOS CODE: 073979C



Today was  
awesome





## Primary School

NSW government schools encourage self-expression and help students become independent learners. Students will develop strong literacy and numeracy skills. Lessons are designed to respond to the needs of individual students.

Primary school education in NSW begins in Kindergarten (5 years of age) and ends in Year 6 (12 years of age).

### Curriculum

Learning in Kindergarten to Year 6 focuses on six key learning areas (KLAs):

- English
- Creative Arts
- Human Society and Its Environment (including Languages)
- Mathematics
- Personal Development, Health and Physical Education
- Science and Technology.

### Intakes

#### Kindergarten to Year 6

- Term 1 (January)
- Term 2 (April)
- Term 3 (July)
- Term 4 (October)

CRICOS CODE: 009092G







## Our Successful Graduates



### **Yuxuan Wang – China**

#### **2012 School Service Award Winner**

"I chose to study at a NSW government school because of the welcoming and supportive study environment, the abundance of subjects to select from and the fun experience of living with a host family. Studying at a NSW government school is an excellent opportunity to challenge and improve yourself."

#### **Subjects studied**

Business Studies, Chemistry, Economics, English as a Second Language, Mathematics Extension 1 & 2, Studies of Religion

#### **Extra-curricular activities**

Prefect, Mentor for international students, Asia-Pacific Model United Nations Conference, Multicultural Day performance



### **Simon Wong – Malaysia**

#### **2013 School Service Award Winner**

"My time at a NSW government school was a truly unforgettable experience. It takes great courage to leave behind the comfort of home, but in return you will be able to grow and mature. You make life-long friends who share similar interests as you and most importantly you will learn to view the world from a different point of view."

#### **Subjects studied**

Ceramics, Chemistry, English, Mathematics, Mathematics Extension 1, Music 2, Music Extension, Physics

#### **Extra-curricular activities**

Band, Student Representative Council



### **Dung Dang Khoa Phu – Vietnam**

#### **2016 School Academic Award Winner**

"I had a lot of support from the very beginning from my international student coordinator and from my teachers and peers at school. They were always trying to help you with the best resources they had."

#### **Subjects studied**

Biology, Chemistry, English as a Second Language, Mathematics Extension 1 & 2, Vietnamese

#### **Extra-curricular activities**

International student orientation program, Multicultural Day



## STUDENT AMBASSADORS

International student ambassadors represent NSW government schools at official functions and help to guide and support existing students. They are chosen for their outstanding academic achievements or their ongoing service and dedication to their school and local community.

## Academic Pathways



*achieve things you think are impossible...*



### Abigail Aguilar – Philippines

**2016 NSW International Student of the Year Award – Schools Winner**

**2017 School Service Award Nominee**

"I chose to study at a NSW government school because it gave me the privilege of being a part of a multicultural community and also to obtain an exceptional educational experience."

### Subjects studied

Biology, Chemistry, English as a Second Language, Hospitality, Mathematics, Photography, Video and Digital Imaging

### Extra-curricular activities

Student representative council, titration competition, buddy for new international students, food preparation at school events



### Saophoan Sieng – Cambodia

**2017 School Service Award Winner**

"Studying at a NSW government school can help you achieve a lot of things that you think are impossible."

### Subjects studied

Business Studies, English, Mathematics Extension 1 & 2, Physics, Studies of Religion, Visual Arts

### Extra-curricular activities

Prefect



### Ji Hyun Choi – South Korea

**2017 Leadership Award Nominee**

"Studying at a NSW government school opened up new ways for me to see what I could really achieve."

### Subjects studied

Chemistry, English, English Extension 1, Legal Studies, Mathematics, Mathematics Extension 1, Modern History, Studies of Religion

### Extra-curricular activities

Prefect, Student Representative Council, basketball, gifted and talented program





*break time!*



## School Life

### A typical school day

School hours are generally from 8.45am to 3.00pm Monday to Friday. In a typical school day, there are five to eight lessons, ranging from 40 minutes to one hour. There are two breaks in the school day – a morning tea break (recess) and a lunch break, both of which are supervised by teachers. Students usually bring their own morning tea and lunch to school or purchase their meals at an additional cost from the school canteen.

Students are expected to attend school every weekday and daily attendance records are kept. Strict attendance is an important condition of the student visa.



### Uniform

NSW government schools have a uniform policy. Schools will provide you with information about their uniform requirements at enrolment.

A school uniform usually costs between A\$250 and A\$300 depending on the number of items bought.

### School Assessment and Academic Progress

School assessments and homework are an important part of the school program. Students may be required to complete assignments, oral presentations and examinations which contribute to their final grades. These assessments help teachers to evaluate academic progress and prepare reports for parents.

### Excursions

Learning occurs both inside and outside the classroom. Schools organise subject specific excursions (for example, a visit to the art gallery, museum or zoo) which provide practical field experiences. Excursions are an important and compulsory part of the school curriculum.







## Sports

Sport is offered during school hours once a week. Sporting events such as athletics and swimming carnivals help to develop team spirit and good sportsmanship skills.

## Extracurricular Learning

A range of extracurricular opportunities are available including sports, school performances, music groups and clubs, debating and public speaking. These activities are a great way for students to practise their English and make new friends.

## Community Engagement

Community engagement through volunteering opportunities helps students develop an increased sense of social responsibility. Students develop global citizenship skills, learn about the importance of helping others and are exposed to diversity and multiculturalism. They apply learning to real life situations and become involved in charities and fundraising activities that address local and global issues.



## A typical school day

### Sample school timetable for high school

Before school	Optional extension classes Performing arts rehearsals Sport training
8:40 – 8:45	Roll Call
8:45 – 9:45	Class 1
9:45 – 10:45	Class 2
10:45 – 11:00	Recess
11:00 – 12:00	Class 3
12:00 – 1:00	Class 4
1:00 – 2:00	Lunch
2:00 – 3:00	Class 5
After school	Optional extension classes Homework centres supported by teachers Optional extracurricular activities e.g. sport, chess club, music, debating, Tournament of the Minds, Mock Trials





# Accommodation Options

Student accommodation options are based on the school year the student will be entering.

## Primary School

## Junior Secondary School

## Senior Secondary School

Kindergarten	1	2	3	4	5	6	7	8	9	10	11	12	
									✓	✓	✓	✓	Homestay
									✓	✓	✓	✓	Parent-nominated carer
					✓	✓	✓	✓	✓	✓	✓	✓	DIBP-approved direct relative
✓	✓	✓	✓	✓	✓	✓	✓	✓	✓	✓	✓	✓	Parent

## Accommodation

Students perform better in school when they live in a supportive family environment.

International students under 18 years of age must live with a parent on a guardian visa or an approved carer. Accommodation options available for students are based on the school year that the student will be entering.

Students not living with a parent or a direct relative approved by Department of Immigration and Border Protection (DIBP) live in accommodation approved by the NSW Department of Education.

The diagram above shows the options available to students depending on their school year.







## Homestay

### What Is Homestay Accommodation?

Homestay accommodation is a unique opportunity for an international student to live with an Australian family and to learn more about Australian culture. Homestay families welcome international students into their homes and lives, accepting them as part of their family.

A homestay family can be an individual, couple or family.

A student placed with an approved NSW government schools homestay family will be met on arrival at Sydney International Airport and supported by a caring family during their studies.

Australia is very multicultural and our homestay families are a reflection of this.

### Parent-Nominated Homestay

For students enrolling in Years 9 to 12, parents may nominate a distant family member or close family friend to be a carer. The homestay carer must be assessed by DE International and meet minimum standards before approval is granted.

### Why Choose Homestay?

Homestay accommodation provides students with:

- a safe place to live
- the opportunity to improve English language skills
- a unique opportunity to experience life with an Australian family
- a caring family environment.

All homestay families have undergone a Working With Children Check (WWCC) and are monitored by a homestay provider registered with DE International.



### How is a Homestay Family Allocated?

Parents will be asked by a DE International registered homestay provider to provide detailed information on their child's preferences. The homestay provider will then consider these when placing the child with a suitable family. The homestay provider will find a homestay family within reasonable travelling distance to their school.

### What to Expect?

Homestay families provide students with:



- their own fully furnished bedroom in the family home (including a bed, study table, chair and cupboards)



- all meals including food to make lunch on school days



- use of household facilities such as the laundry.

As a member of the family, students can expect to contribute to family chores, including tidying their bedroom and clearing the table after meals.





*I love  
Sydney*



## Things to See and Do

Famous beaches,  
festivals, national parks,  
iconic landmarks,  
spectacular coastlines,  
museums, unique wildlife  
– there's no end to what  
you can see and do in  
New South Wales.



### Things to do in Sydney

Explore one of the most beautiful cities in the world. Sydney is home to world renowned landmarks – the Sydney Harbour Bridge, Sydney Opera House, Darling Harbour. Climb the bridge, cruise the harbour and explore national parks and unique wildlife.

There are many exciting events to see and enjoy all year round:

- Vivid Sydney light festival
- New Year's Eve fireworks
- Sporting events
- Festivals and cultural celebrations
- Exhibitions, museums, theatres and shows.

### Explore An International City

Sydney is a dynamic and diverse city that has a multicultural lifestyle. Communities are very welcoming of international students. Our schools value the diversity that our international students bring to school communities.

### Things to do in Regional NSW

From cities and major regional centres to small towns and outback communities, regional NSW offers diverse and unique experiences for visitors.

- Discover some of Australia's native wildlife, including kangaroos, koalas, exotic birds and more
- Take a bushwalk through beautiful national parks
- Visit one of the World Heritage-listed areas including the Blue Mountains, Willandra Lakes, Lord Howe Island and the Gondwana Rainforests
- Explore, swim, snorkel and surf the spectacular coastline

**"I've learnt that there are lots of different cultures in the world because Australia is a very multicultural country and that helped me shape a personal value that is more open-minded."**

Mahime Watanabe – Japan – 2017 School Service Award Nominee

**"International students are excellent ambassadors for their home country and allow all students and teachers to have a deeper appreciation of other cultures."**

Elizabeth Godwin – Principal, Cabramatta High School





## Transport

Sydney has an excellent public transport system including trains, buses, light rail and ferries.

Public transport provides students with easy travel options to and from school by train, bus, light rail or ferry.

International students can obtain discounted fares at half price.

For train, bus, ferry and light rail trip planning, maps, ticketing, transport updates and accessible travel information, visit [transportnsw.info](http://transportnsw.info) or call **131 500**.

## Weather



### Summer

December – February

Average temperature in Sydney

18.6 – 25.8°C



### Autumn

March – May

Average temperature in Sydney

14.6 – 22.2°C



### Winter

June – August

Average temperature in Sydney

8.8 – 17°C



### Spring

September – November

Average temperature in Sydney

11 – 23°C



*the blue mountains*



# Online Information

Visit our website for a wide range of information about NSW government schools  
**[internationalschool.edu.au](http://internationalschool.edu.au)**



## Information includes:

- individual profiles on participating NSW government schools and Intensive English Centres
- brochures for our programs
- registered education agent search function:
  - find agents in your country
  - all contact details are provided, including the agent's website address.
- links to documents and other forms
- accommodation options
- registered homestay providers
- fee information
- term dates for upcoming years
- latest news and updates
- information on other programs offered, including:
  - Study Abroad which offers an exciting opportunity to experience a uniquely Australian lifestyle while studying. Students can spend 3, 6, 9 or 12 months at a school in Sydney or regional NSW.
  - Study Tours which provide visiting adult and student groups with a program of educational activities, cultural and social interaction with Australian students and sightseeing. Tour duration can range from half a day to 10 weeks.

*I had a lot of support from the very beginning*



## Video

Our YouTube and Vimeo channels (NSW Government Schools) have videos of events, such as the annual International Student Awards, as well as testimonials from international students, teachers and student ambassadors.





# Entry Requirements

## Academic

- Students entering the preliminary course (Year 11) must have completed Year 10 or its equivalent in Australia and overseas. They must also have good passing grades in school reports in the main academic subjects and English.
- Students enrolling in Years 7 to 10 must provide evidence that they have good passing grades in the main academic courses including English.

## English

- Enrolment in a NSW government school Intensive English Centre

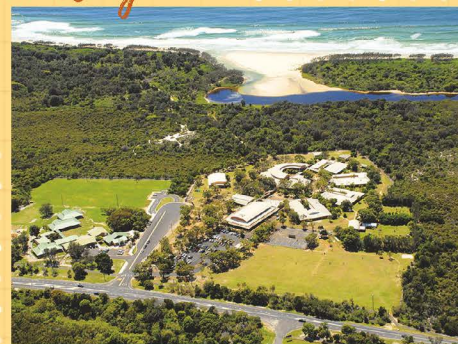
OR

- Secondary studies conducted in English for a minimum of two years

OR

- Minimum IELTS (International English Language Testing System, General or Academic) score of 5.5 (Year 11) or 5.0 (Years 7 to 10) or equivalent results in another approved English language test (including TOEFL, AEAS and Eiken).
- There are no English language entry requirements for primary school children in Kindergarten to Year 6. Students 12 years of age or over may need to enrol at an Intensive English Centre before they enrol in Year 7.

*My school in  
Byron Bay*



*Riverside Girls  
High School*





Year level currently  
enrolled in

10

# How to Apply

Choose between two methods of applying:  
through a registered education agent or  
through our online application form.

## Through a DE International Registered Education Agent

Registered education agents must provide you with accurate and up-to date information and advice regarding programs, schools, application procedures and living and studying in Australia. They will also assist with your visa application.

### How to Find an Agent

There is an agent search function on our website. You can search by country, agency name or program type. All contact details are available, including the agent's website address, so that you can choose the agent you think is best for you.

We recommend choosing only the services of education agents registered with DE International.

### Apply Online

You can submit your application online by registering through our website. Follow the prompts and upload your supporting documents.

**Go to:** [internationalschool.edu.au](http://internationalschool.edu.au)

### Contact Details

#### Website

[www.internationalschool.edu.au](http://www.internationalschool.edu.au)

#### Email

[deionline@det.nsw.edu.au](mailto:deionline@det.nsw.edu.au)

#### Phone

+61 2 9244 5555 overseas or  
1300 300 229 (option 2) in Australia

#### Mail

DE International  
Locked Bag 53  
Darlinghurst NSW 1300 Australia

## Application Process

1

**Student** submits completed application form with supporting documents to DE International.

2

**DE International** assesses the application against eligibility criteria and, if successful, confirms placement with IEC and school.

3

**DE International** issues offer letter detailing study plan and course costs.

4

**Student** and parents accept offer and return signed offer to DE International with payment of fees.

5

**DE International** issues Confirmation of Enrolment (CoE) and Confirmation of Appropriate Accommodation and Welfare (CAAW) form (if required).

6

**Student** applies for student visa.





Today's the day

30



# Calendar and Fees

## 2018-2020 Calendar

The academic school year in New South Wales is divided into four terms.

### 2018

<b>Term 1</b>	30 January to 13 April
<b>Term 2</b>	1 May to 6 July
<b>Term 3</b>	24 July to 28 September
<b>Term 4</b>	15 October to 21 December

### 2019

30 January to 12 April
30 April to 5 July
23 July to 27 September
14 October to 20 December

### 2020

29 January to 9 April
28 April to 3 July
21 July to 25 September
12 October to 18 December

## 2018/2019 International Student Fees

Description	Amount
Application fee (non-refundable)	A\$280
<b>Tuition fees per student per year*</b>	
Years K to 6 (Primary)	A\$12,000
Years 7 to 10 (Junior Secondary)	A\$13,800
Years 11 and 12 (Senior Secondary)	A\$15,200
Intensive English Centre	A\$8,000 for two terms
<b>Homestay accommodation</b>	
Parent nomination homestay fee**	A\$330
Accommodation placement fee	A\$330
Homestay fee	A\$330 per week
<b>Other fees</b>	
Airport pick-up fee	A\$160
School uniforms	A\$250-\$300
School transfer fee***	A\$600



\* Tuition fees cover the charges for tuition and administration (includes text book hire and excursions up to the value of A\$300).

\*\* Parent nomination homestay must be inspected annually and fee must be paid for each year for the duration of the course or until the student turns 18, whichever occurs first.

\*\*\* School transfer fee applies to students who request a change of school after the school placement is confirmed with the Confirmation of Enrolment (CoE).



# NSW Government Schools

## High School Locations



5km

Intensive English Centres

To download a profile of any of the schools, visit our website [internationalschool.edu.au](http://internationalschool.edu.au)





No.	School name	Loc.
1	Alstonville High School	N1
2	Arthur Phillip High School	C6
3	Asquith Boys High School	E3
4	Asquith Girls High School	E3
5	Bankstown Girls High School	D9
6	Bankstown Senior College and Bankstown Intensive English Centre	C9
7	Barrenjoey High School	I2
8	Beverly Hills Girls High School and Beverly Hills Intensive English Centre	D9
9	Birrong Boys High School	D8
10	Birrong Girls High School	D8
11	Blacktown Boys High School	A5
12	Blacktown Girls High School	A5
13	Blakehurst High School	E10
14	Bonnyrigg High School	A8
15	Bossley Park High School	A8
16	Burwood Girls High School	E7
17	Byron Bay High School	N1
18	Cabramatta High School and Cabramatta Intensive English Centre	B8
19	Canley Vale High School	B8
20	Canterbury Boys High School	E8
21	Canterbury Girls High School	E8
22	Castle Hill High School	C4
23	Casula High School	A9
24	Cecil Hills High School	A8
25	Chatswood High School and Chatswood Intensive English Centre	F6
26	Chester Hill High School and Chester Hill Intensive English Centre	C8
27	Cleveland St Intensive English High School	G8
28	Coffs Harbour High School	N2
29	Concord High School	E7
30	Condell Park High School	C9
31	Crestwood High School	B5
32	Cronulla High School	F11
33	Cumberland High School	D5
34	Davidson High School	G5
35	Dulwich High School of Visual Arts and Design	F8
36	East Hills Boys High School	C9
37	East Hills Girls Technology High School	C9
38	Endeavour Sports High School	E11
39	Engadine High School	C11

No.	School name	Loc.
40	Epping Boys High School	E5
41	Evans High School and Evans Intensive English Centre	A5
42	Fairfield High School and Fairfield Intensive English Centre	B7
43	Fairvale High School	B7
44	Galston High School	C3
Georges River College:		
45	- Hurstville Boys Campus	E9
46	- Oatley Senior Campus	E10
47	- Peakhurst Campus	D9
48	- Penshurst Girls Campus	E9
49	Holroyd High School and Holroyd Intensive English Centre	B7
50	Homebush Boys High School	D7
51	Hoxton Park High School	A8
52	Hunters Hill High School	F7
53	J J Cahill Memorial High School	G9
54	James Cook Boys Technology High School	F9
55	Kellyville High School	B4
56	Killarney Heights High School	G5
57	Kingscliff High School	N1
58	Kingsgrove High School	E9
59	Kingsgrove North High School	E9
60	Kogarah High School and Kogarah Intensive English Centre	F9
61	Kotara High School	N3
62	Ku-ring-gai High School	F3
63	Lake Macquarie High School	N3
64	Lambton High School	N3
65	Liverpool Girls High School	B8
66	Lucas Heights Community College	C11
67	Lurnea High School and Lurnea Intensive English Centre	A9
68	Macarthur Girls High School	C6
69	Macquarie Fields High School	A10
70	Marrickville High School and Marrickville Intensive English Centre	F8
71	Marsden High School and Marsden Intensive English Centre	D6
72	Menai High School	C10
73	Merrylands High School	C7
74	Miller Technology High School and Miller Intensive English Centre	A9
75	Mitchell High School	A5
76	Moorebank High School	B9
77	Moorefield Girls High School	F10

No.	School name	Loc.
78	Mosman High School	G6
79	Muirfield High School	C5
80	Mullumbimby High School	N1
81	Narrabeen Sports High School	H4
82	Newcastle High School	N3
Northern Beaches Secondary College:		
83	- Balgowlah Boys Campus	H6
84	- Cromer Campus	H4
85	- Freshwater Senior Campus	H5
86	- Mackellar Girls Campus	H6
87	Northmead Creative and Performing Arts High School	C6
88	Pennant Hills High School	D4
89	Pittwater High School	I3
90	Port Hacking High School	E11
91	Randwick Boys High School	G9
92	Randwick Girls High School	G9
93	Riverside Girls High School	F7
94	Rose Bay Secondary College	H8
95	Ryde Secondary College	E6
96	Sir Joseph Banks High School	C9
97	Southern Cross School	N1
98	South Sydney High School	G9
99	St Ives High School	F4
100	St Johns Park High School	A7
101	St Marys Senior High School	A5
102	Strathfield Girls High School	E8
103	Strathfield South High School	D8
Sydney Secondary College:		
104	- Balmain Campus	F7
105	- Blackwattle Bay Campus	F7
106	- Leichhardt Campus	F8
107	Sylvania High School	E11
108	Tempe High School	F9
109	The Forest High School	G5
110	The Jannall High School	D11
111	Toormina High School	N2
112	Turrumurra High School	E5
113	Warners Bay High School	N3
114	Warrawong High School and Warrawong Intensive English Centre	N3
115	Willoughby Girls High School	G6
116	Wollongong High School of the Performing Arts	N3
117	Woolgoolga High School	N2
118	Wyndham College	A4

Note: Participating schools are subject to change





NSW Government Schools  
NSW Department of Education  
Locked Bag 53  
Darlinghurst NSW 1300 Australia



+61 2 9244 5555 overseas or  
1300 300 229 (option 2) in Australia



[deionline@det.nsw.edu.au](mailto:deionline@det.nsw.edu.au)



[internationalschool.edu.au](http://internationalschool.edu.au)

CRICOS PROVIDER NAME: NSW DEPARTMENT OF EDUCATION

CRICOS PROVIDER CODE: 00588M